

FEATURE WALL COLLECTION

NATURAL STONE DESIGN

— Stone 3D

Transform your interiors with our premium 3D natural stone collection. Dimensional walls with sculptural depth and dynamic shadow play that create stunning visual impact for residential and commercial spaces.

ABOUT US



Founded in 1992 as Associated Marbles, **SNK Surfaces** has grown into a globally acclaimed manufacturer and exporter of premium porcelain tiles and natural stones. Headquartered in Delhi, India, we blend decades of craftsmanship with state-of-the-art technology.

We have a strong footprint in over 30 countries, including the USA, UK, and across Europe. Everything we produce reflects our unwavering commitment to quality and design excellence.

32+

YEARS

30+

COUNTRIES

500+

PROJECTS

100%

QUALITY

Our Vision & Mission

Quality Excellence

Deliver high-quality products that meet international standards.

Innovation

Continuously develop new finishes and formats for evolving needs.

Partnership

Build long-term partnerships based on transparency and reliability.

Why Choose SNK Surfaces



Direct Quarry Access

Own and operate marble quarries ensuring quality.



Global Expertise

Proven track record in residential and commercial projects.



Advanced Manufacturing

State-of-the-art facilities with precision machinery.

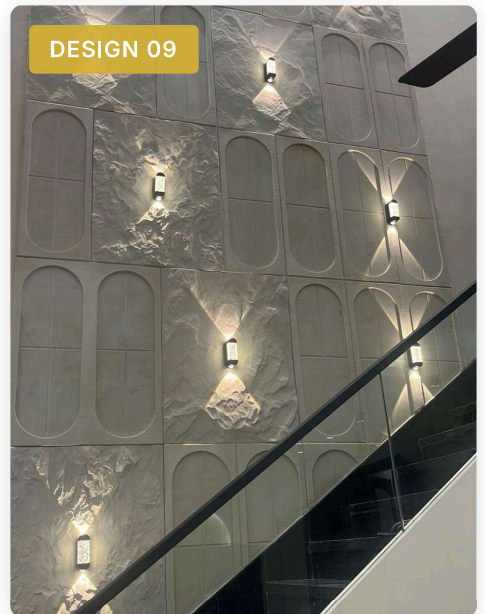
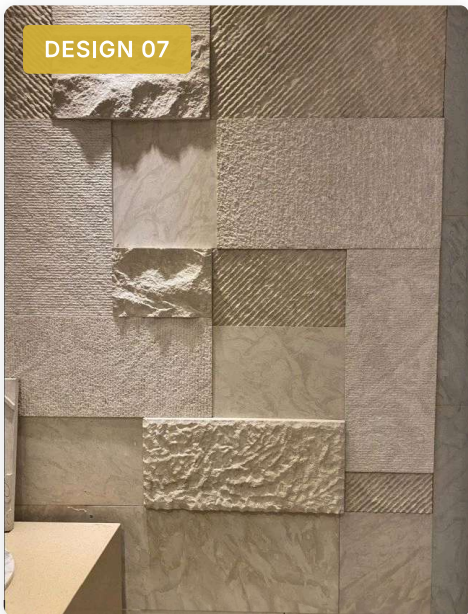
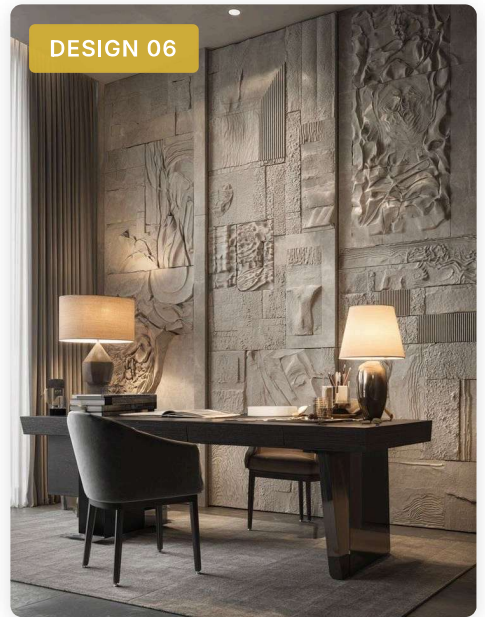
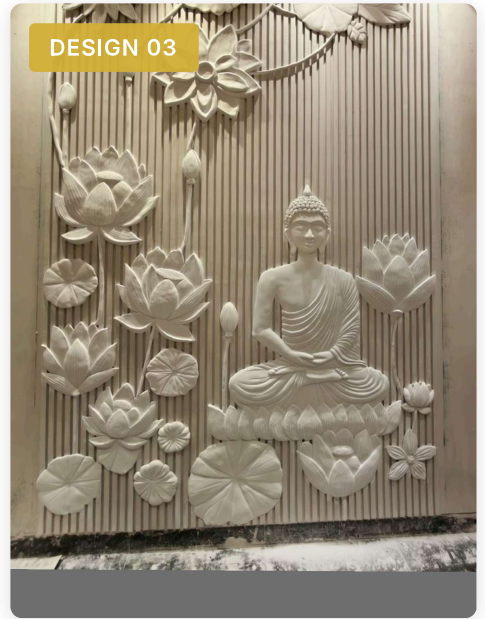


Comprehensive Support

Design consultation to installation and after-sales service.

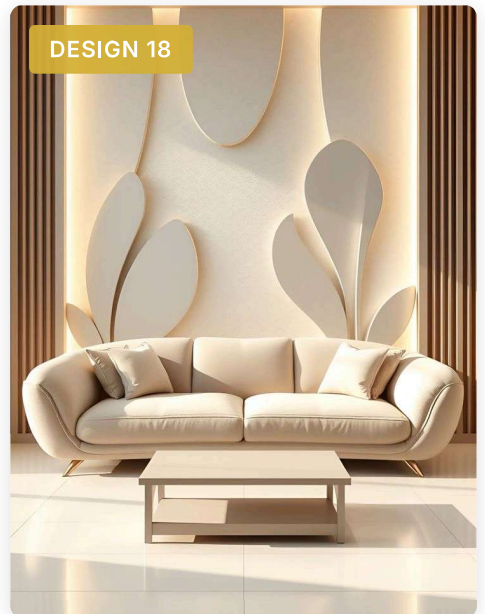
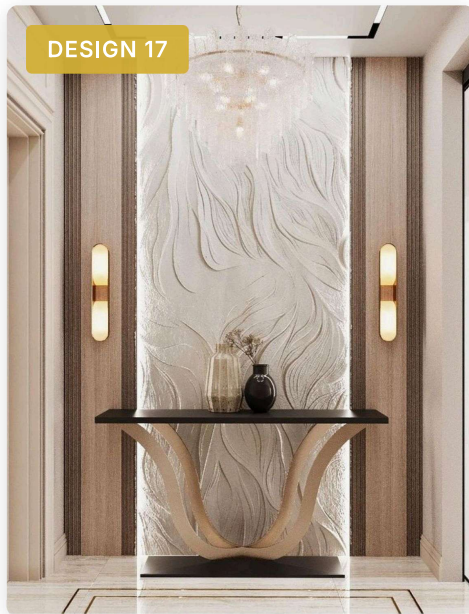
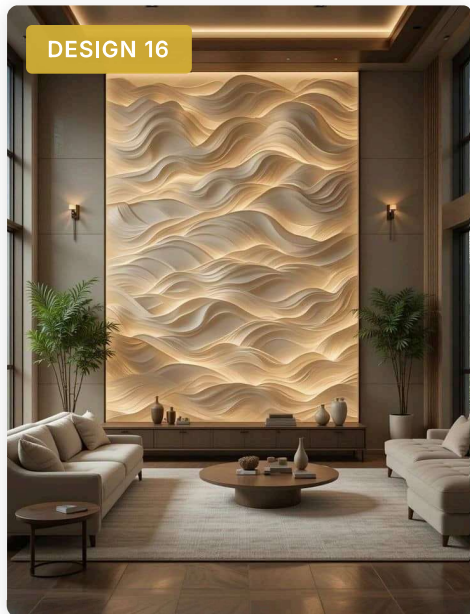
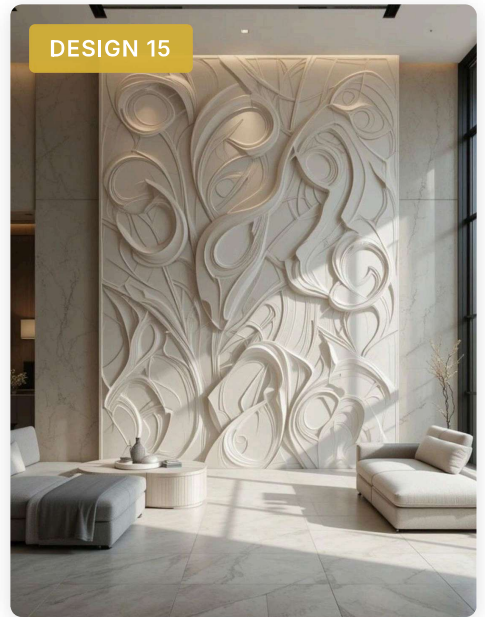
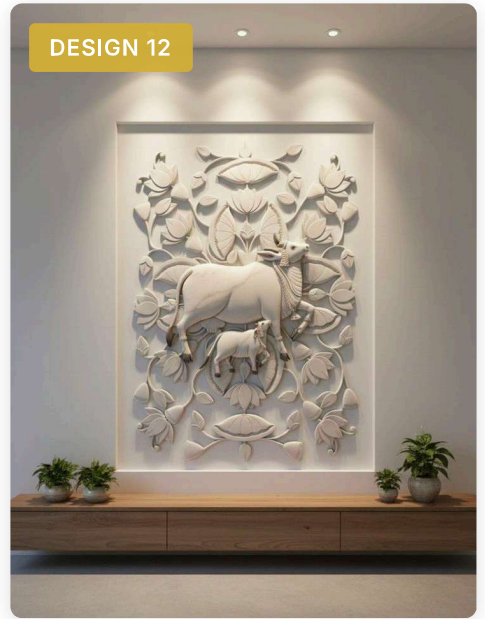
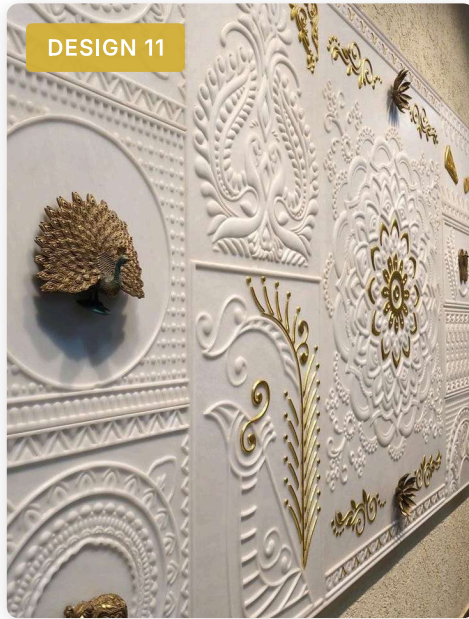
STONE 3D

Three-dimensional natural stone walls with depth and shadow play



STONE 3D

Premium 3D stone wall designs and patterns



PRODUCT INFORMATION

STONE 3D

Three-dimensional natural stone walls with sculptural depth and dynamic shadow play. Unique textures create stunning visual impact.

Specifications

- 3D Depth:** 10-40mm
- Thickness:** 20-50mm
- Panel Size:** 150-600mm
- Patterns:** Custom designs

3D Patterns

Wave	Stacked
Split Face	Geometric
Mosaic	Custom

Features

- ✓ Dramatic visual impact
- ✓ Light and shadow play
- ✓ Natural variations
- ✓ Exceptional durability

Applications

Residential: Living rooms, bedrooms, dining areas

Commercial: Reception, lobbies, offices, retail

Hospitality: Hotels, restaurants, spas

Installation

- Professional installation recommended
- Use high-quality stone adhesive
- Ensure proper wall preparation
- Technical support available

Maintenance

- Clean with pH-neutral products
- Seal porous stones every 1-2 years
- Wipe spills immediately
- Avoid harsh chemicals



Transform Your Space with Natural Stone

STONE 3D FEATURE WALLS

Experience the perfect blend of nature's artistry and architectural innovation. Our natural stone collection brings timeless elegance and sophisticated design to every project.

32+

YEARS

30+

COUNTRIES

500+

PROJECTS

100%

QUALITY

PHONE

+353 89 413 9274

EMAIL

info@snksurfaces.com

WEBSITE

www.snksurfaces.com