

The logo for SNK SURFACES is centered on the page. It consists of the letters 'SNK' in a large, bold, black sans-serif font. Below 'SNK', the word 'SURFACES' is written in a smaller, black, all-caps sans-serif font, with each letter spaced out. The text is contained within a square frame that is split vertically: the left half is a thick black border, and the right half is a thin grey border. The entire logo is centered within a larger frame that also has a thick black left half and a thin grey right half.

SNK

S U R F A C E S



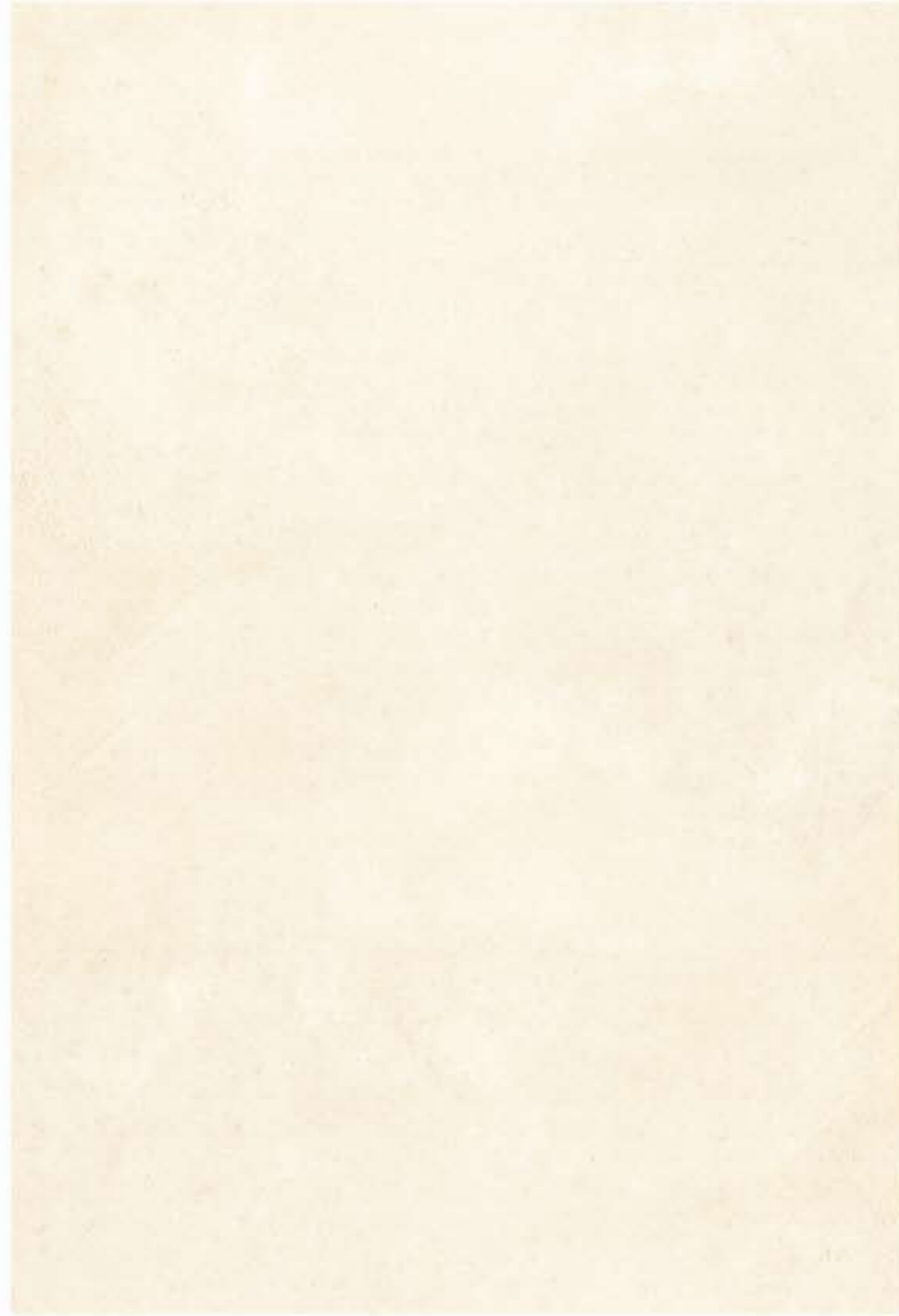
HAZZEL STONE CREMA





AOSTA GREY





AOSTA CREMA





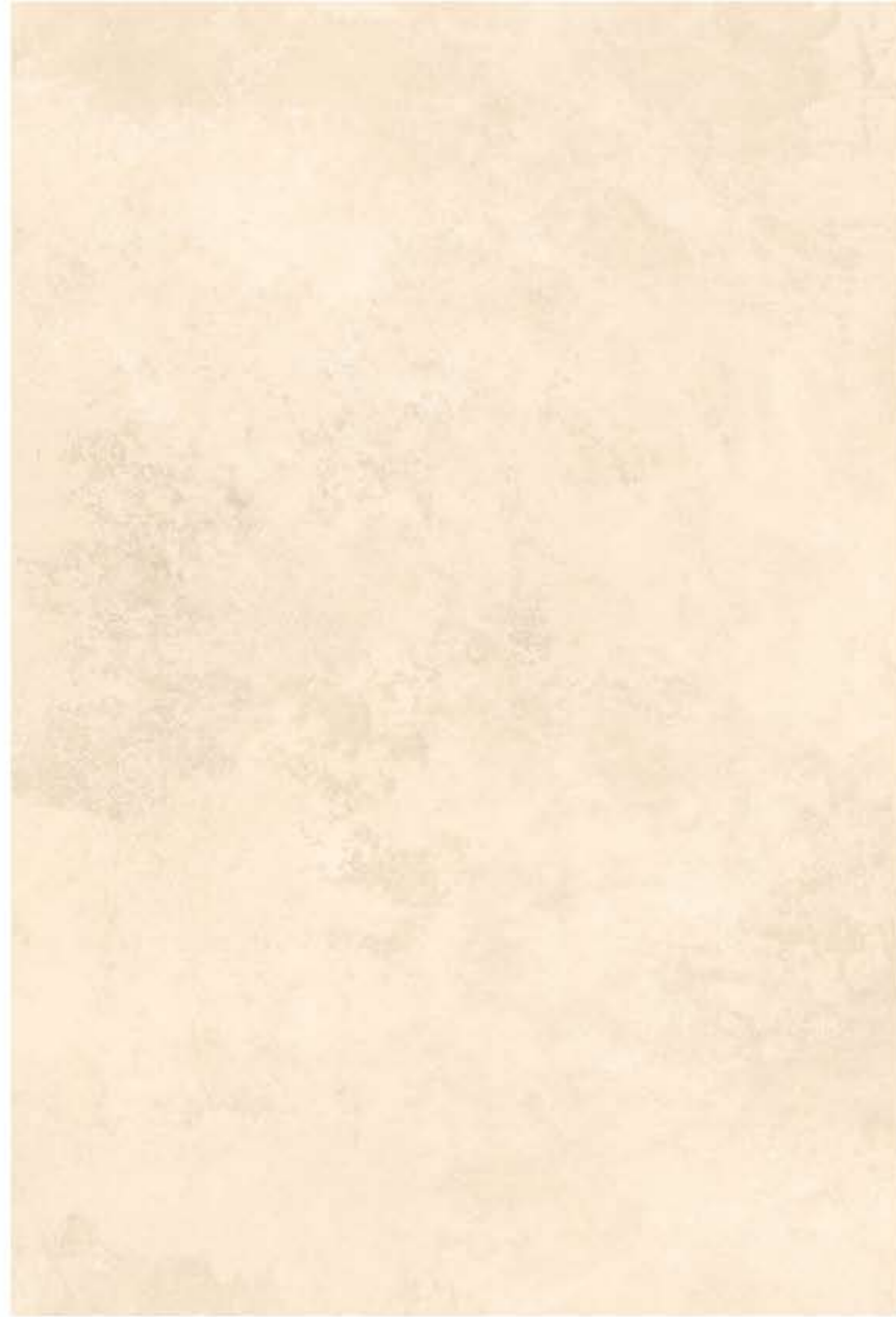
BRAZILIAN GREY





BRAZILIAN BLACK





CEMENTINO_BEING





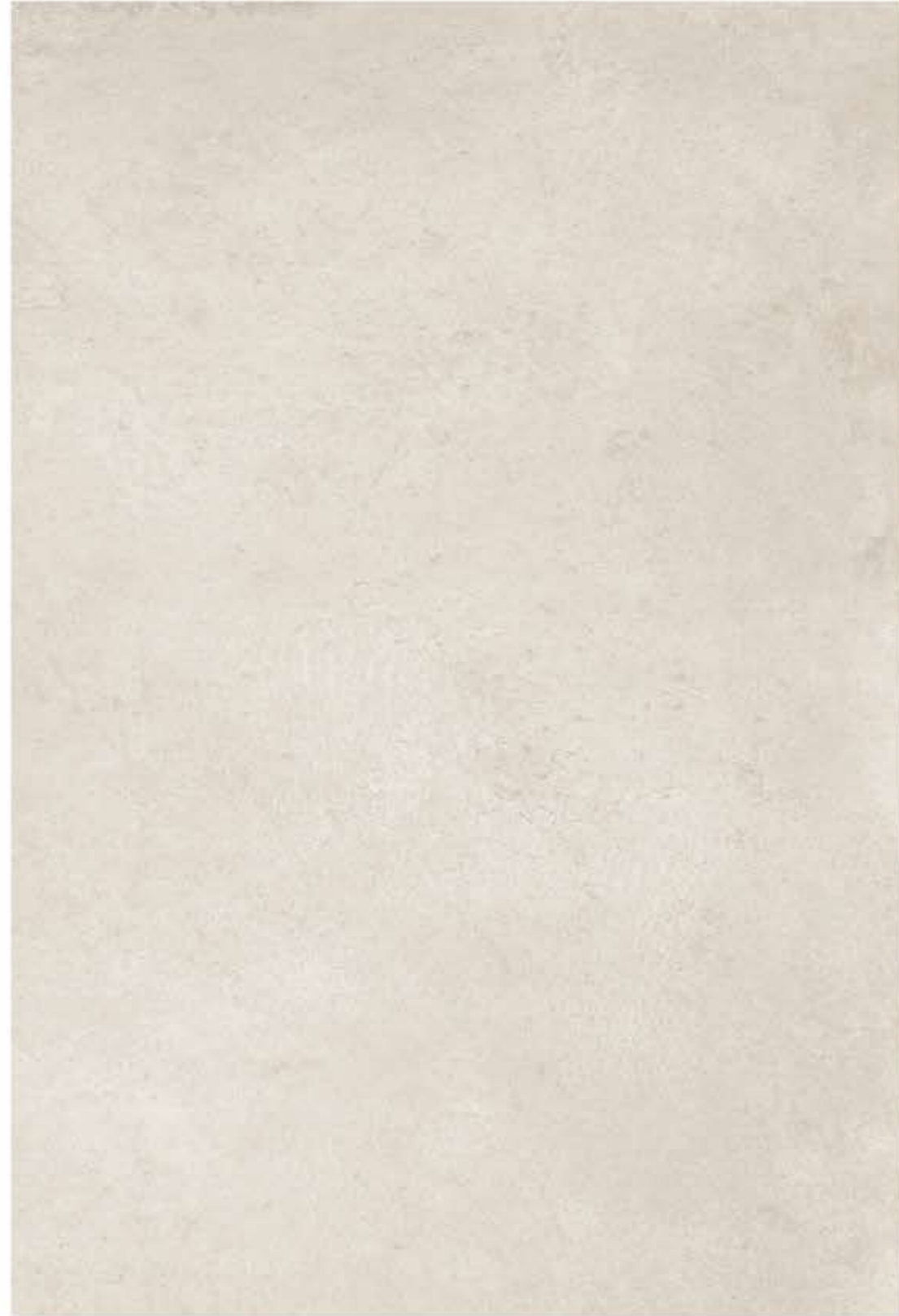
CEMENTINO_GREY





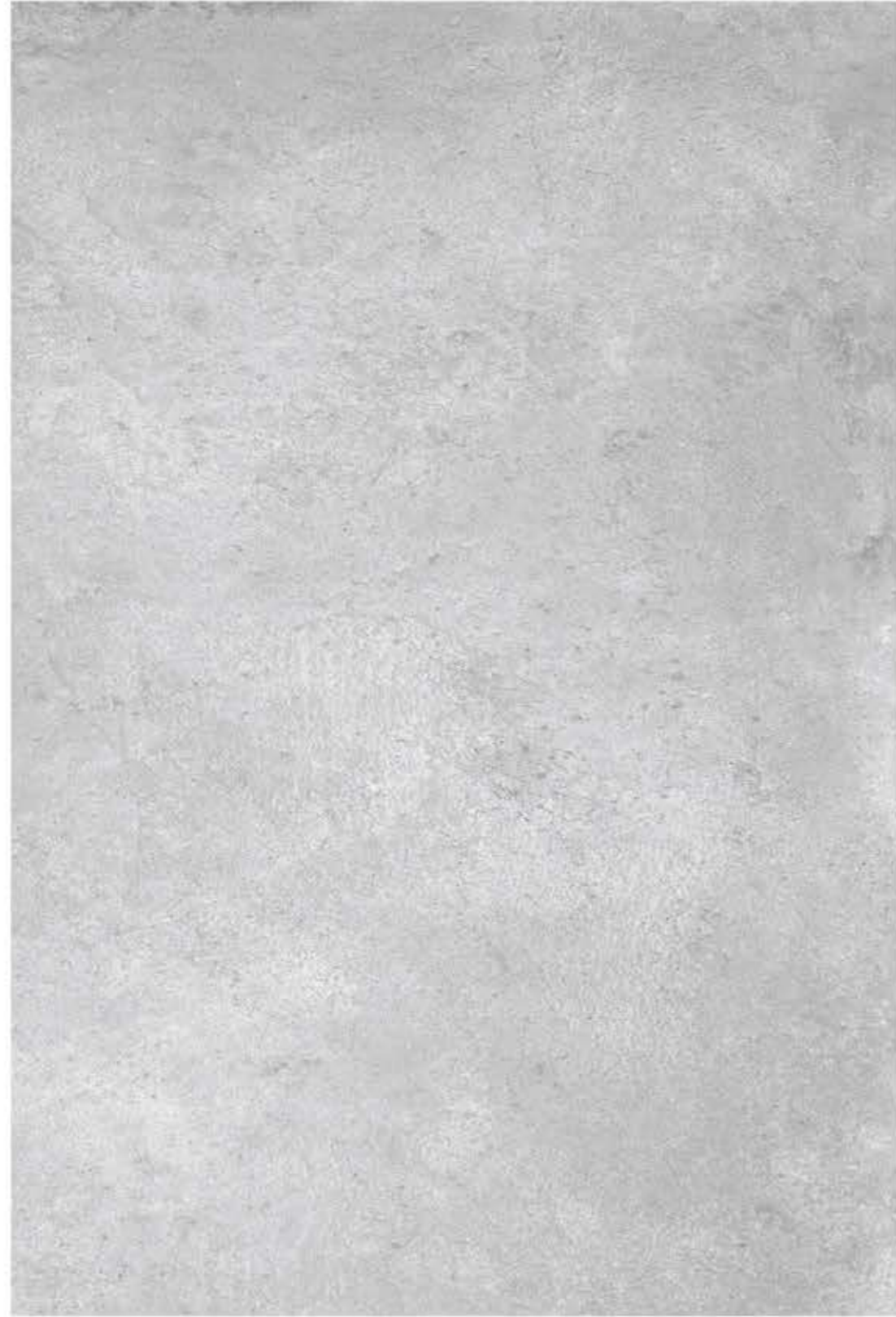
CEMENTINO_NERO





CEMENTRUM BEIGE





CEMENTRUM GREY





COBBLE STONE ASH





COBBLE_STONE_GREY





COUNTRY LGY





HAZZEL STONE ASH





HAZZEL STONE BEIGE





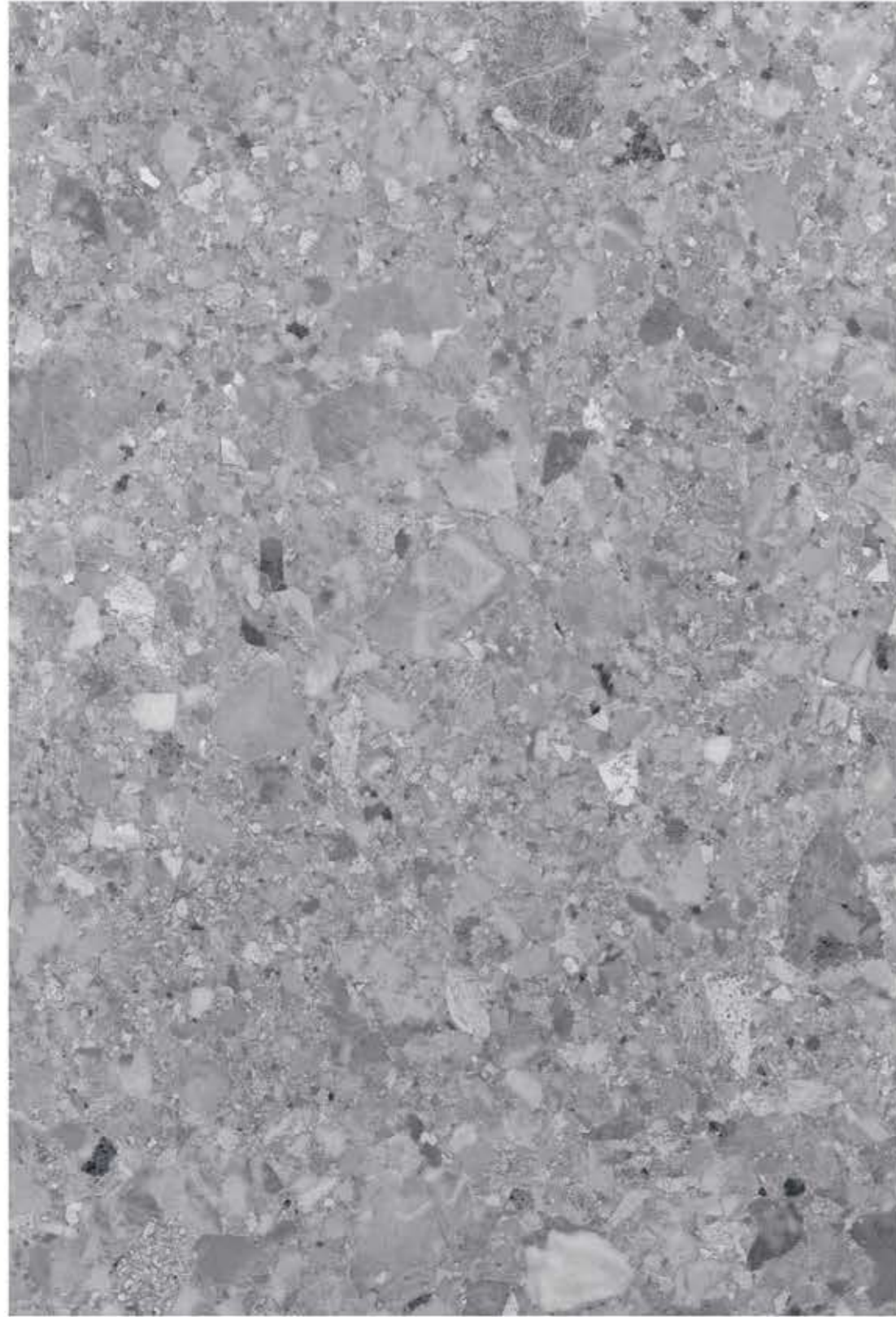
NATURAL_SLATE





NOOR CREMA



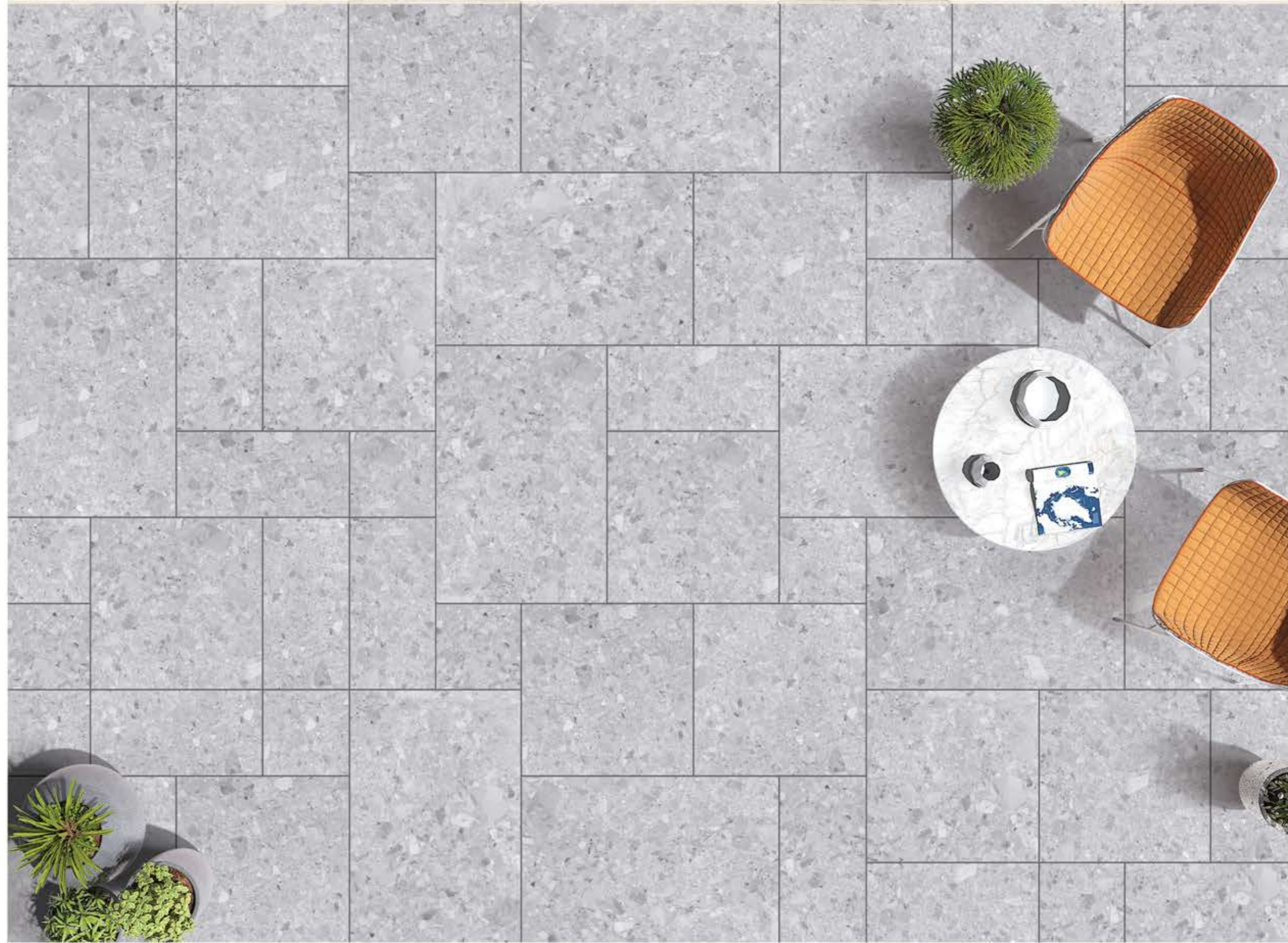


NOOR GIRGIO





NOOR LGY



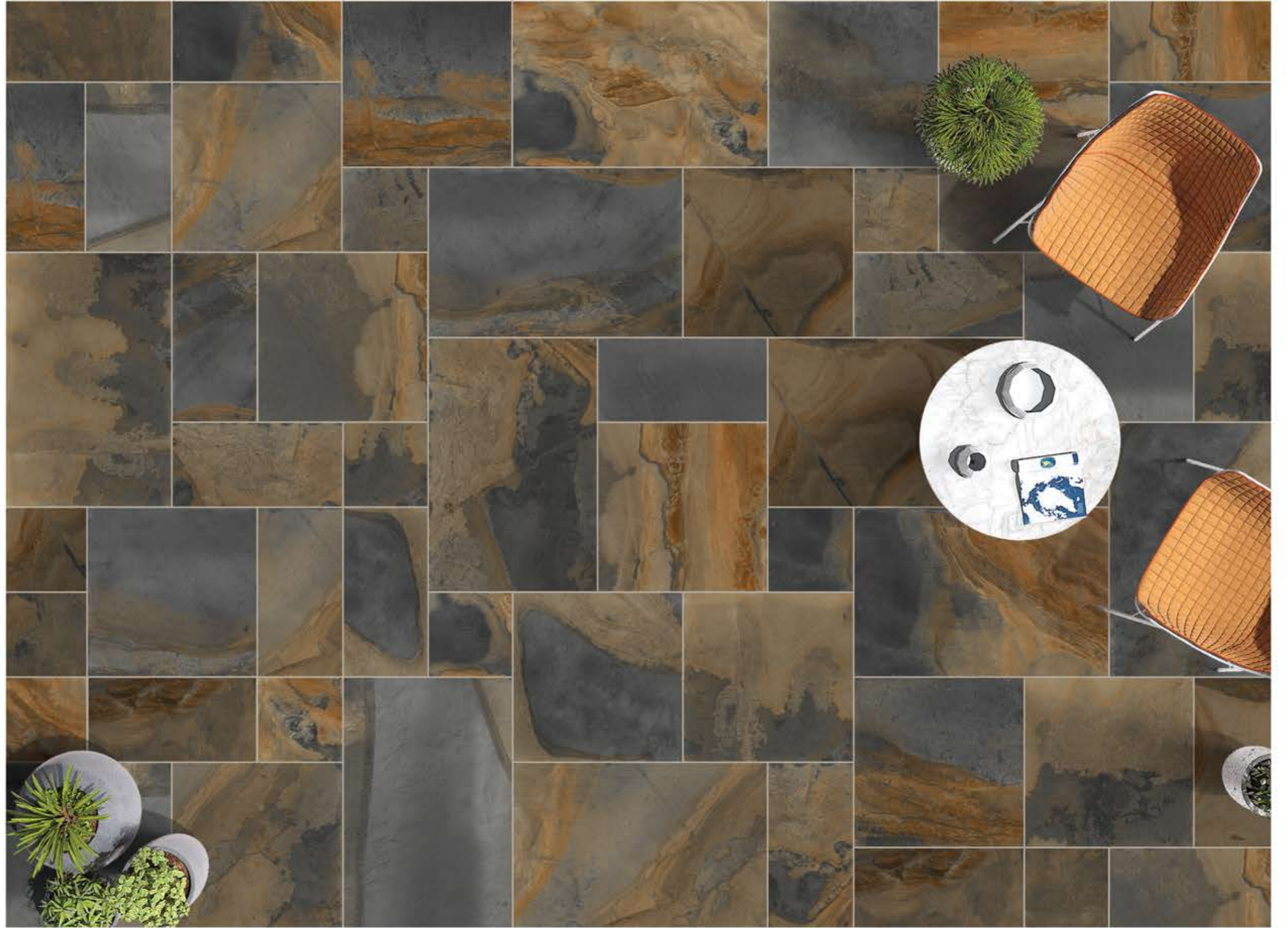


QUARZITE_NATURAL







SLATE_IMPERIO



PACKING DETAILS (PATIOPACK)

SIZE	PCS/ CRAT	MT2/ PCS	MT2/ CRAT (EACH SIZE)	MT ² / CRAT	CRAT / CTN	MT2/ CTN	WEIGHT / CTN (Kg)
600X900mm (20mm)	13	0.54	7.02	14.85	40	594	27750
600x600mm (20mm)	13	0.36	4.68				
600x296mm (20mm)	13	0.18	2.34				
296x296mm (20mm)	9	0.09	0.81				



 <https://snksurfaces.com> |  info@snksurfaces.com